

MFA INSTRUCTIONS FOR SECURITY KEY SET UP

The purpose of this document is to help our users with this transition by providing a step-by-step guide to enable MFA using security key for user accounts. Security Keys, a USB-connected device, are required for Multi-Factor Authentication using this method.

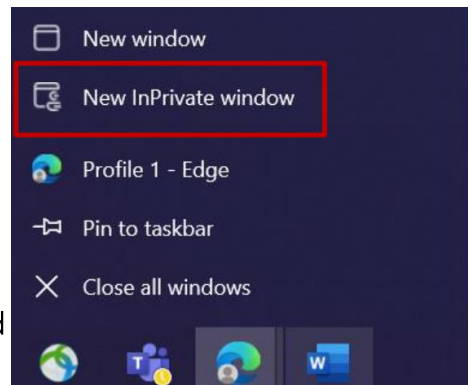
SETUP SECURITY KEY FOR MULTI-FACTOR AUTHENTICATION



- * A Security Key device is required for Multi-Factor Authentication (MFA) using this method.
- * A secondary MFA method (SMS, Phone Call, Authenticator App) is required before setting up Security Key.

1. Please, log into your system (work laptop, work desktop)

Close all browser windows and open a new private/incognito browser session (right-click on Microsoft Edge browser icon and select “New InPrivate Window”) or open your browser (Microsoft Edge or Google Chrome) then press and hold “Ctrl” (for Windows) / “Command/Cmd” (for Mac) and “Shift” and then press the “N”-key



2. In the address field of the browser enter the URL: <https://myaccount.microsoft.com>

Enter your User ID plus the extension “@ext.volvogroup.com” and click on “Next”

Microsoft
Sign in
M123456@ext.volvogroup.com
[Can't access your account?](#)
Next

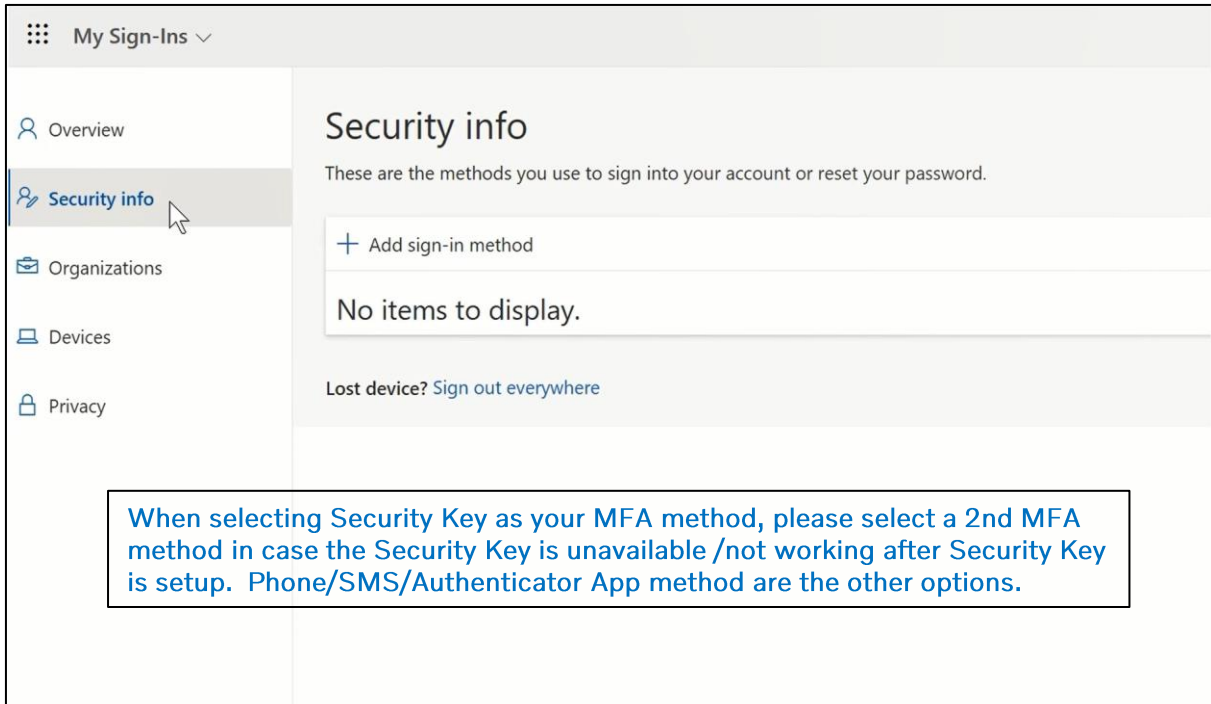
Welcome to Volvo Group Cloud services. If you encounter a problem to login, please contact the Global Service Desk. If you are an external user (XDS only), please sign in using userid@ext.volvogroup.com.

Microsoft
← M123456@ext.volvogroup.com
Enter password
.....
[Forgot my password](#)
Sign in

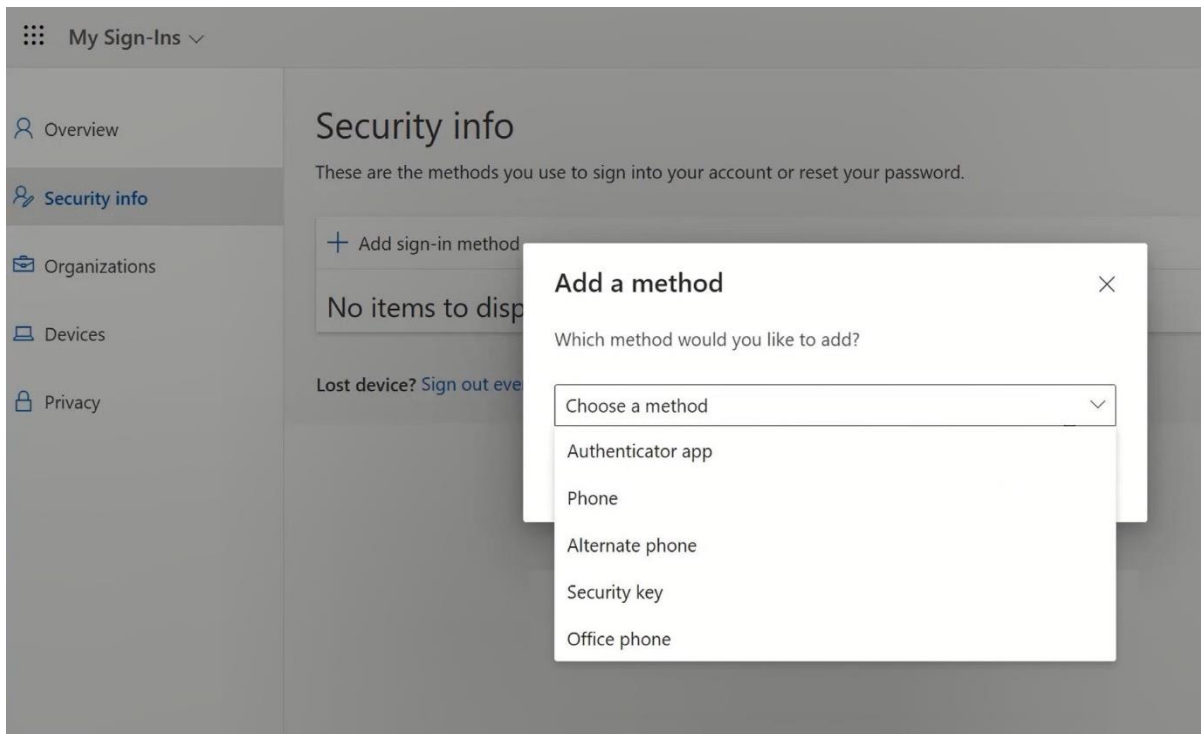
Welcome to Volvo Group Cloud services. If you encounter a problem to login, please contact the Global Service Desk. If you are an external user (XDS only), please sign in using userid@ext.volvogroup.com.

3. Enter the password by using the same password you use for our portals (example: Trucks Dealer Portal, Trucks Customer Portal) or Tech Tool.
4. Click “Sign in”

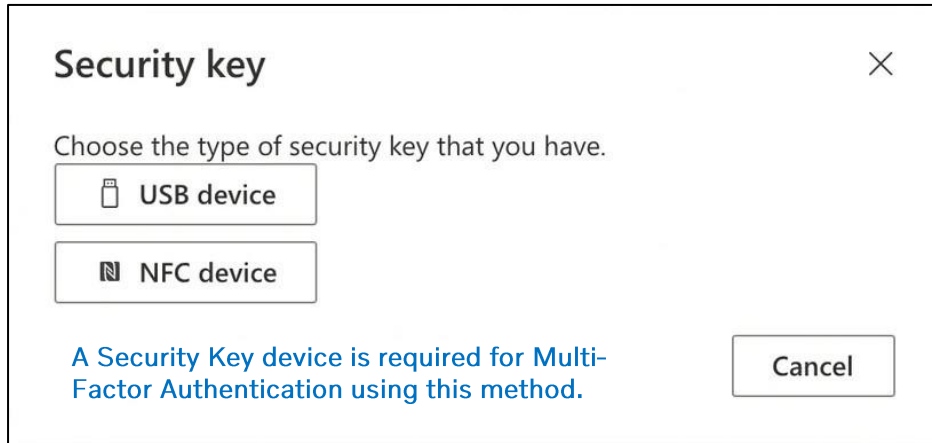
You will be forwarded to Microsoft’s Security Info page



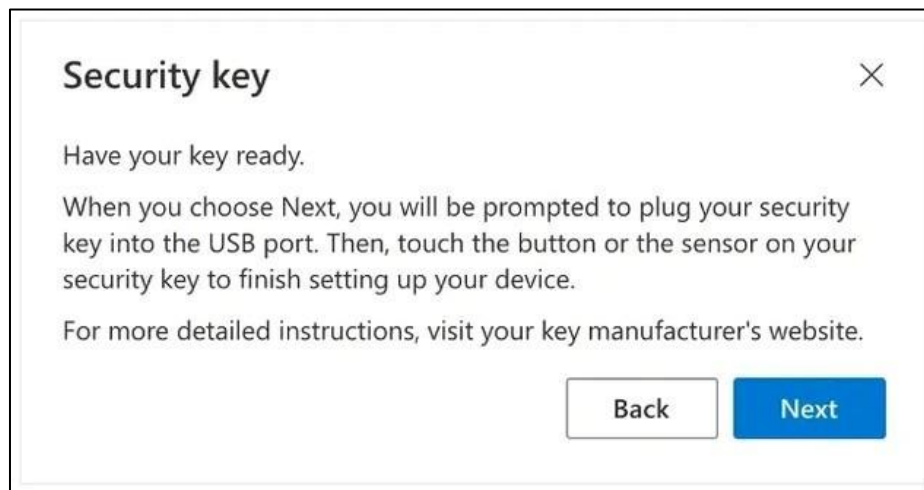
5. On the next page, click on “+ Add sign-in method”



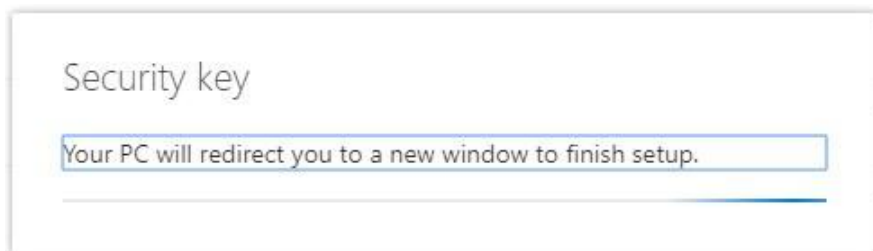
6. In the pop-up, expand the dropdown-menu “Choose a method” and select “Security Key” as your MFA method.



7. In the pop-up, click on “USB device”



8. Read the disclaimer and click on “Next”



You will be redirected to a dialogue of “Windows Security” to set up your security key

V O L V O

Create a passkey on a phone or tablet

Scan this QR code with a camera on the device where you want to create a passkey for login.microsoft.com



Use a different device



Cancel

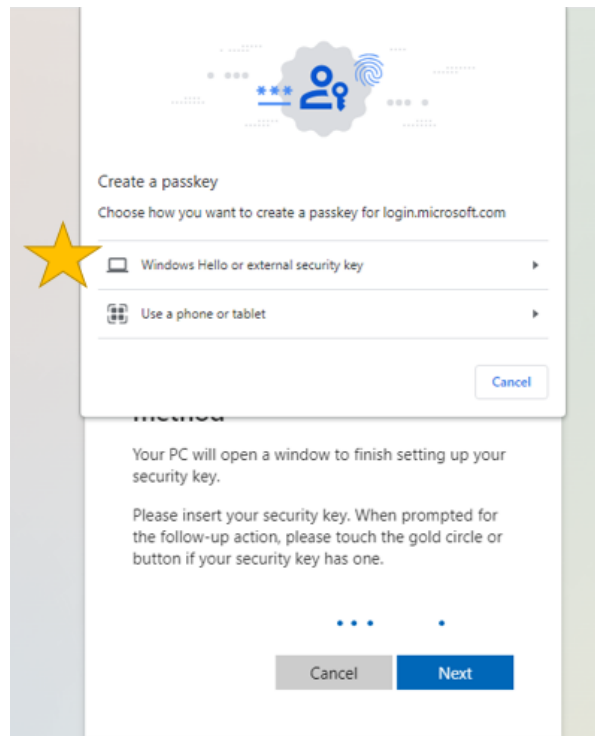
Please insert your security key. When prompted for the follow-up action, please touch the gold circle or button if your security key has one.



Cancel

Next

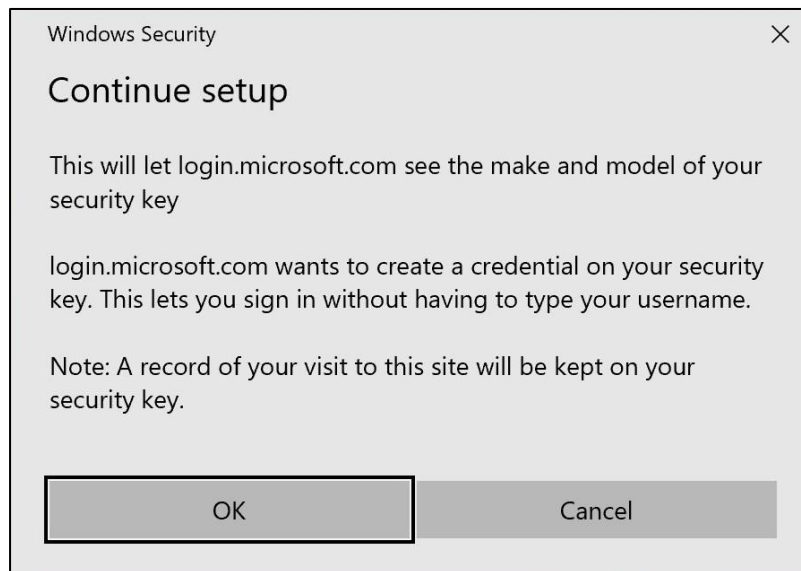
9. Click on “Use a different device” in the new window



10. Click “Windows Hello or external security key” in the new window



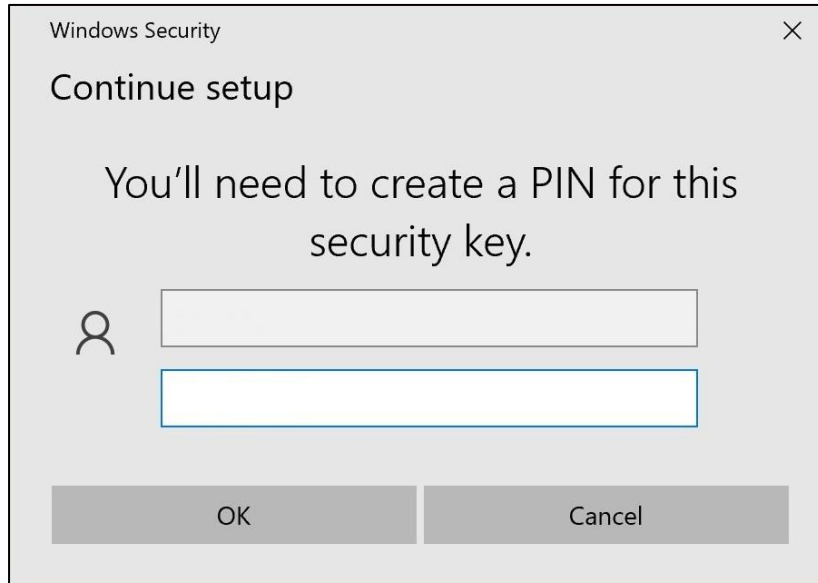
11. Click on "OK" in the new window



12. Click "OK" to continue

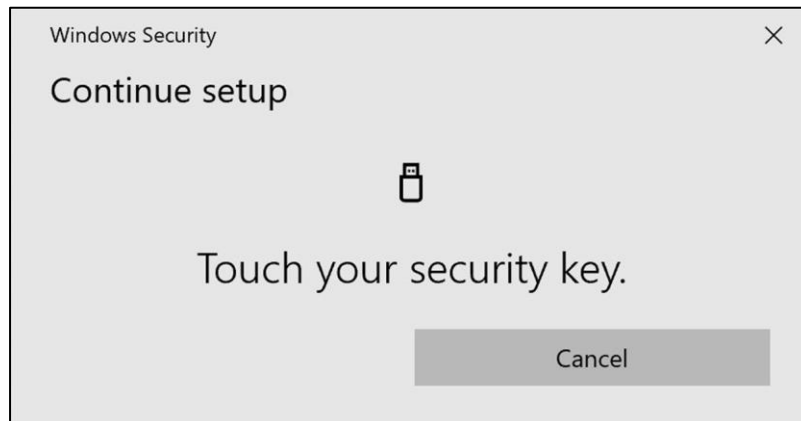


13. Insert your security key into a USB port on your device

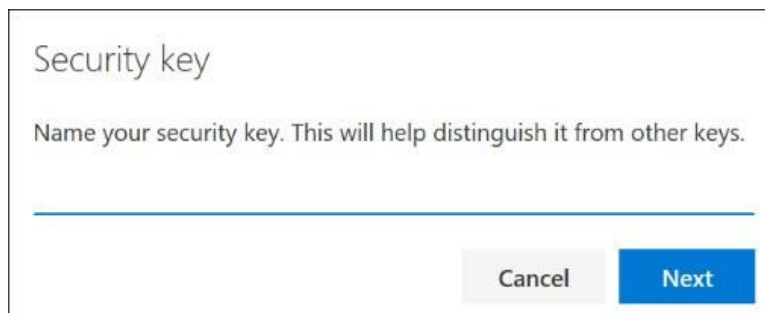


14. Enter a PIN to personalize your security key

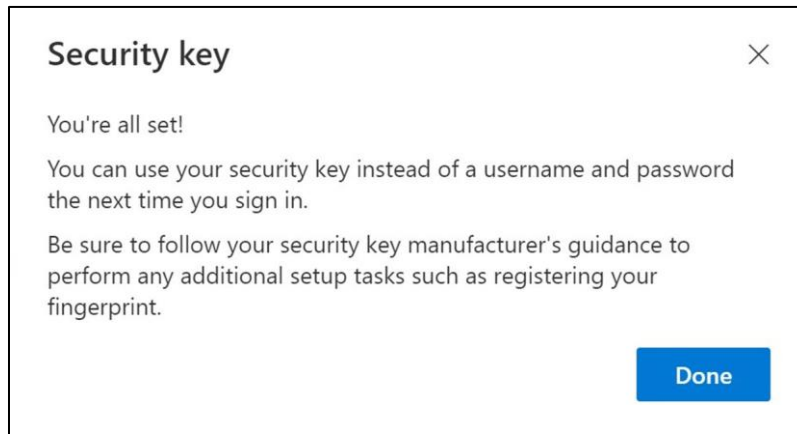
Enter your PIN again to confirm, then click on "OK"



15. Touch your security key again to continue



16. Enter a name for your security key in the next window and click on "Next"



Your security key is now set up

17. Click on "Done"

You can see your new MFA method "Security Key" in the list on your "Security Info" page

Now you have enabled MFA by "Security Key" to your user account You are done!

Two MFA Methods should be selected for each user to minimize support required to access Volvo Applications